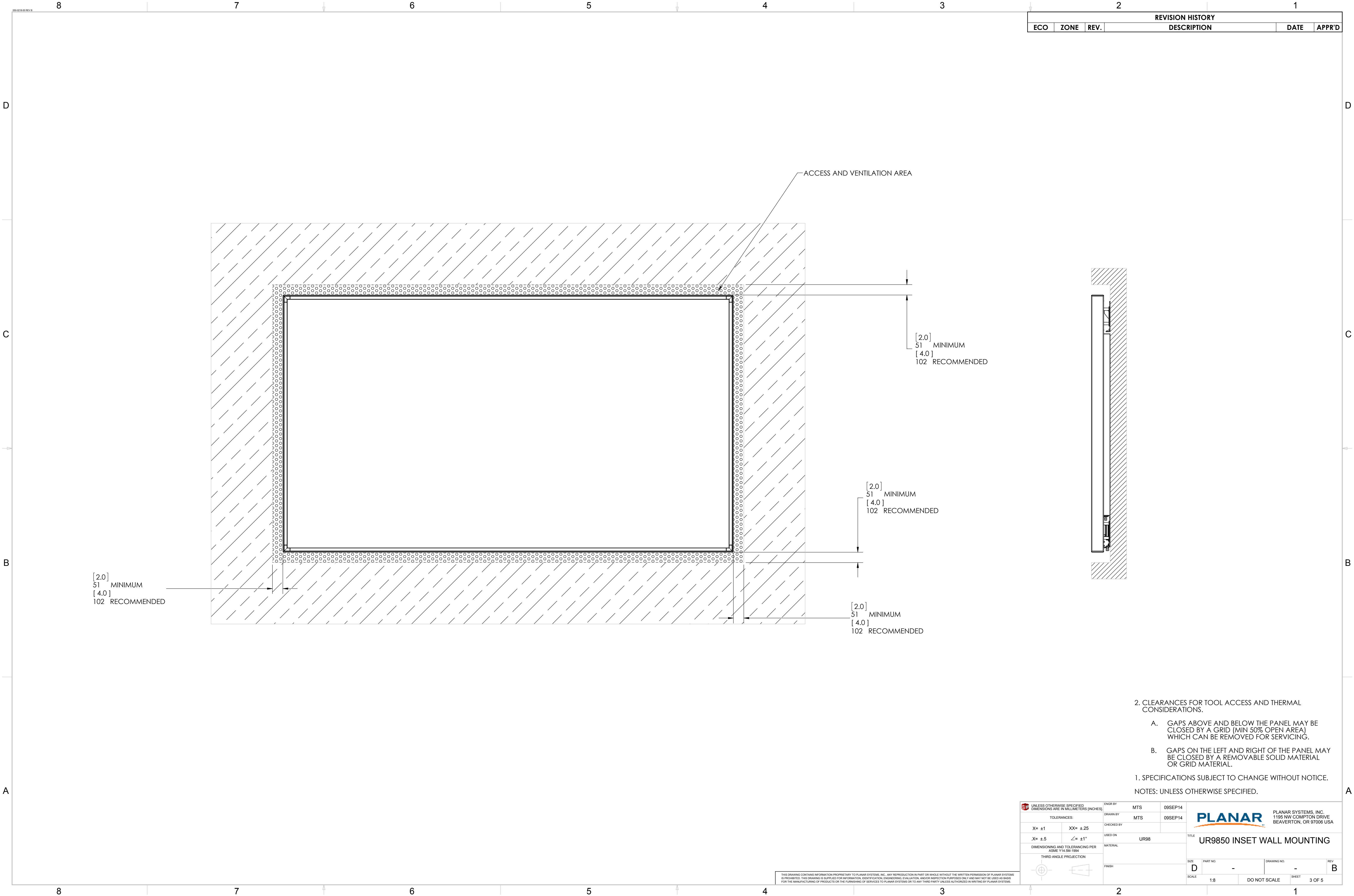







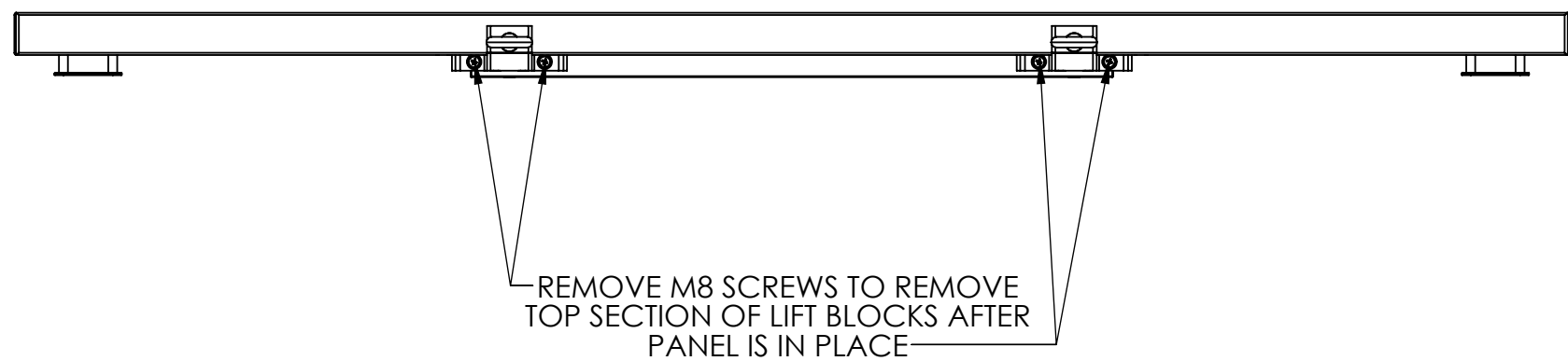
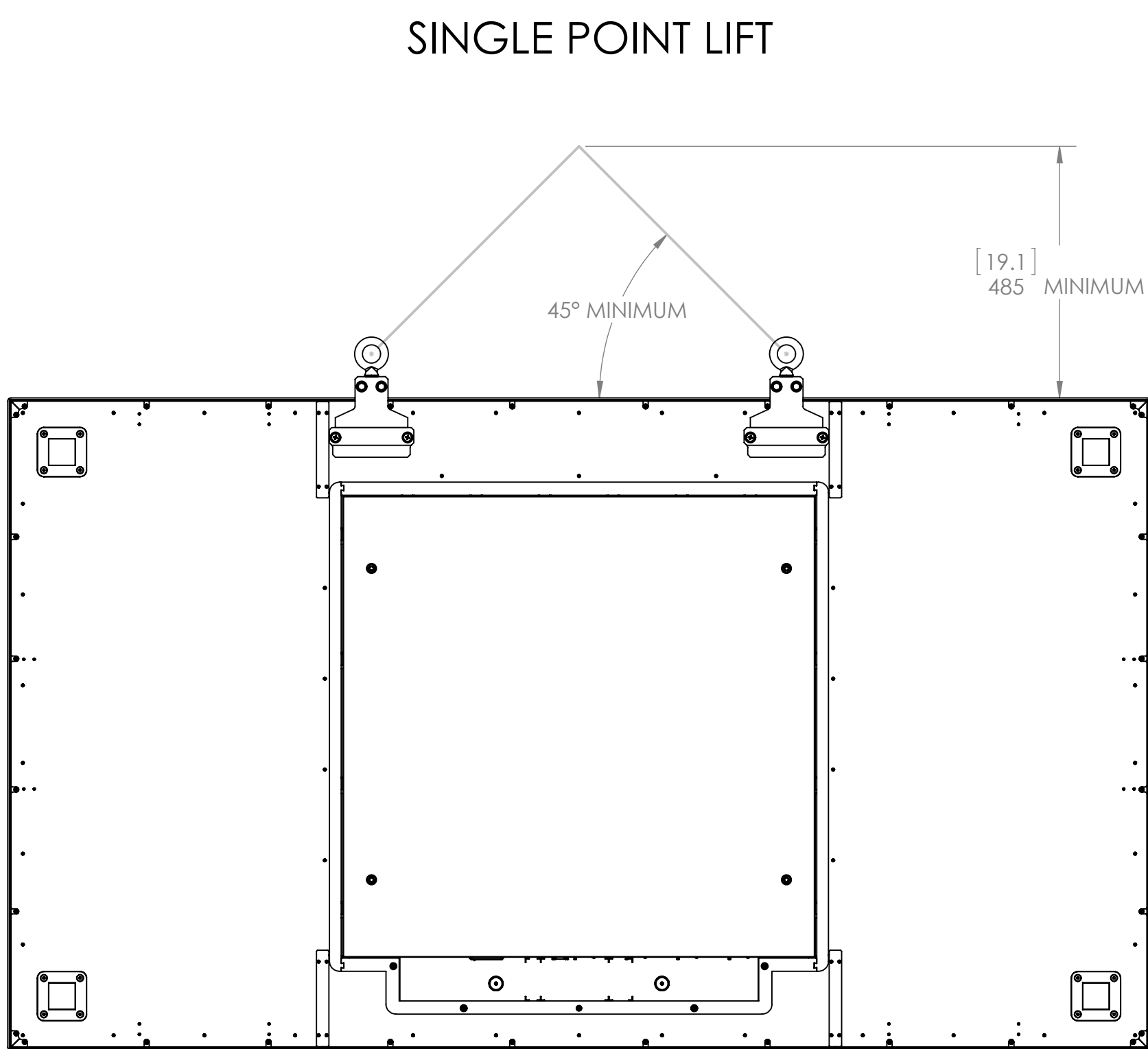
UNLESS OTHERWISE SPECIFIED DIMENSIONS ARE IN MILLIMETERS (INCHES)		ENGR BY EJS	08OCT14	PLANAR PLANAR SYSTEMS, INC. 1195 NW COMPTON DRIVE BEAVERTON, OR 97006 USA	
TOLERANCES:		DRAWN BY EJS	08OCT14		
X= ±1	XX= ±.25	CHECKED BY		TITLE UR9850 TOUCH OUTLINE	
.X= ±.5	∠= ±1°	USED ON UR98			
DIMENSIONING AND TOLERANCING PER ASME Y14.5M-1994		MATERIAL		SIZE D	PART NO. 997-7828-XX
THIRD ANGLE PROJECTION		FINISH		SCALE 1:10	DRAWING NO. -
				DO NOT SCALE	REV B
				SHEET 2 OF 5	



REVISION HISTORY				
ECO	ZONE	REV.	DESCRIPTION	DATE
				APPR'D

UNLESS OTHERWISE SPECIFIED: DIMENSIONS ARE IN MILLIMETERS (INCHES)		ENGR BY MTS	09SEP14	 PLANAR SYSTEMS, INC. 1195 NW COMPTON DRIVE BEAVERTON, OR 97006 USA	
TOLERANCES:		DRAWN BY MTS	09SEP14		
X= ±1	XX= ±.25	CHECKED BY		TITLE UR9850 INSET WALL MOUNTING	
.X= ±.5	∠= ±1°	USED ON UR98			
DIMENSIONING AND TOLERANCING PER ASME Y14.5M-1994		MATERIAL		SIZE D	
THIRD ANGLE PROJECTION 		FINISH			
SCALE 1:8		DO NOT SCALE		PART NO. -	DRAWING NO. -
				SHEET 3 OF 5	REV B

UNLESS OTHERWISE SPECIFIED DIMENSIONS ARE IN MILLIMETERS [INCHES]		ENGR BY MTS		09SEP14		 PLANAR SYSTEMS, INC. 1195 NW COMPTON DRIVE BEAVERTON, OR 97006 USA	
TOLERANCES:		DRAWN BY MTS		09SEP14			
X= ±1 XX= ±25		CHECKED BY				 TITLE UR9850 (TOUCH) LIFT BLOCK USE	
X= ±5 ∠= ±1°		USED ON		UR98			
DIMENSIONING AND TOLERANCING PER ASME Y14.5M-1994		MATERIAL					
THIRD ANGLE PROJECTION		FINISH					
				SIZE D	PART NO. -	DRAWING NO. -	REV B
				SCALE 1:10	DO NOT SCALE		SHEET 4 OF 5



1. SPECIFICATIONS SUBJECT TO CHANGE WITHOUT NOTICE.
NOTES: UNLESS OTHERWISE SPECIFIED.

THIS DRAWING CONTAINS INFORMATION PROPRIETARY TO PLANAR SYSTEMS, INC., ANY REPRODUCTION IN PART OR WHOLE WITHOUT THE WRITTEN PERMISSION OF PLANAR SYSTEMS IS PROHIBITED. THIS DRAWING IS SUPPLIED FOR INFORMATION, IDENTIFICATION, ENGINEERING, EVALUATION, AND/OR INSPECTION PURPOSES ONLY AND MAY NOT BE USED AS BASIS FOR THE MANUFACTURING OF PRODUCTS OR THE FURNISHING OF SERVICES TO PLANAR SYSTEMS OR TO ANY THIRD PARTY UNLESS AUTHORIZED IN WRITING BY PLANAR SYSTEMS.